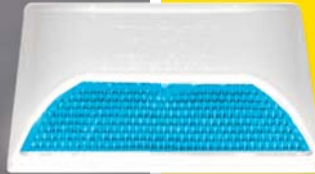
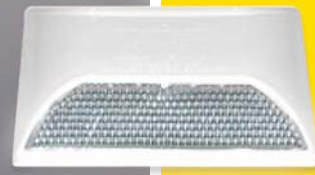


The King of Road Studs

brought to you by
ONWARD CHEMICALS
Traffic Safety Products Division



rayolite® World Renowned Reflective Pavement Markers

Used across the world with
approvals in all major countries.

The Round Shoulder Standard and Long-Life reflective pavement markers are designed to offer :

- maximum strength
- high-reflectivity and
- lower tire impact.

The brightly colored housing provides high visibility for daytime delineation. Improved smooth-edge shape reduces impact on tires thus increasing its lifespan. Protective brow protects the top area of the lens from deterioration. Round Shoulder ARC Long-Life and Round Shoulder FH Long-Life Reflectors have an abrasion resistance coating, chemically bonded to the lens surface, to protect it from the grinding action of dirt, sand and contact from traffic volume. The Round Shoulder FH has an additional interior coating.

Specifications

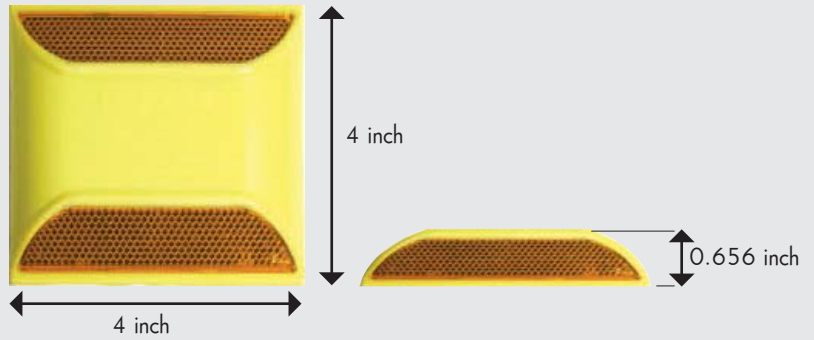
Material: True Cube-Corner type Reflex Reflector, molded of optic grade Methyl Methacrylate (plastic)

Reflective Area: 2.86sq.in.

Housing: Molded of high impact ABS compound for durability

Packed: 50 per carton

Weight: Approximate weight 23 lbs. per carton



Lens Type



Type B/RS2W
Two-Way Clear



Type D/RS2A
Two-Way Amber



Type H/RS1A
One-Way Amber



Type K/RS1R
One-Way Red



Type Z/RSWA
Clear and Amber



Type C/RSWR
Clear and Red



Type G/RS1W
One-Way Clear



Type X/RSAR
Amber and Red



Type DR/RS2R
Two-Way Red



Type 2B/RS2B
Two-Way Blue

Features	Round Shoulder	Round ShoulderARC	Round ShoulderFH
Maximum Strength	✓	✓	✓
High-Reflectivity	✓	✓	✓
Reduces Tire Impact	✓	✓	✓
Smoothed Edge Shape	✓	✓	✓
High Visibility	✓	✓	✓
Protective Brow	✓	✓	✓
Abrasion Resistance Coating		✓	✓
Interior Coating			✓

How to Apply Markers

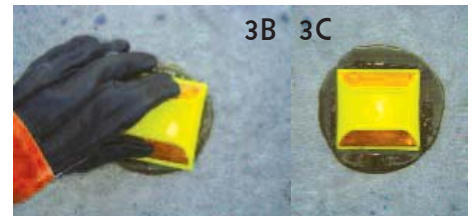
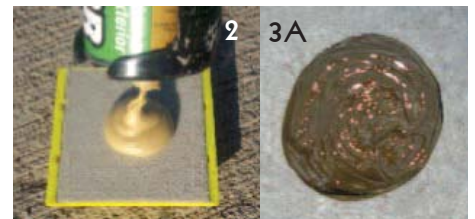
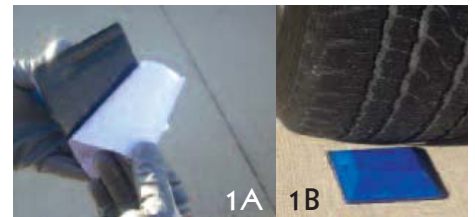
Prepare Surface Area

1. Clean & prime the surface area
2. Prepare the surface by removing any loose materials from the road surface.

Apply Markers

Three Application Methods

1. Peel off the protective paper of the butyl pad (1A). Place marker on road surface and apply weight to secure marker to the surface (1B).
2. Apply epoxy to the bottom of the marker, spreading evenly.
3. Apply adequate amount of bituminous adhesive to the road surface (3A). Road surface should be dry. Place marker on the prepared road surface applying slight pressure until the marker contacts the road surface (3B) and forces a bead of epoxy or bituminous around all four corners (3C).



For further details, please contact:

ONWARD CHEMICALS PVT. LTD.

Headquarters

10-11, Creative Estate, N. M. Joshi Marg, Lower Parel (East), Mumbai – 400 011, India
Tel : +91-22-4054 6474 | Fax : +91-22-4054 6400
Email : sales@onwardchem.com

www.onwardchem.com

Disclaimer of Warranty and Liability

Nothing mentioned herein is to be construed as a recommendation to use or sell the product in conflict with any patent. ONWARD CHEMICALS MAKES NO WARRANTIES AS TO MERCHANTABILITY, FITNESS FOR A PARTICULAR PURPOSE OR OTHERWISE WITH RESPECT TO, whether used alone or in combination with any material. Onward Chemicals offers no guarantee of satisfactory results from reliance upon information, statements or recommendations contained herein and disclaims all liability for any resulting loss or damage.

Chennai

Tel : +91-44-2680 1165, 2680 1175
Email : chennai@onwardchem.com

Delhi NCR

Tel : +91-129-251 0748 | Fax : +91-129-251 0530
Email : delhi@onwardchem.com